

Legend

- East Anglia TWO Windfarm Site
- East Anglia TWO Offshore Cable Corridor
- Former East Anglia Zone

Principal Sediment Components (%)

- Gravel
- Sand
- Silt

Rev	Date	By	Comment
1	13/05/2019	FC	First Issue.

Prepared: FC
 Checked: PM
 Approved: PP

Scale @ A3
 1:200,000

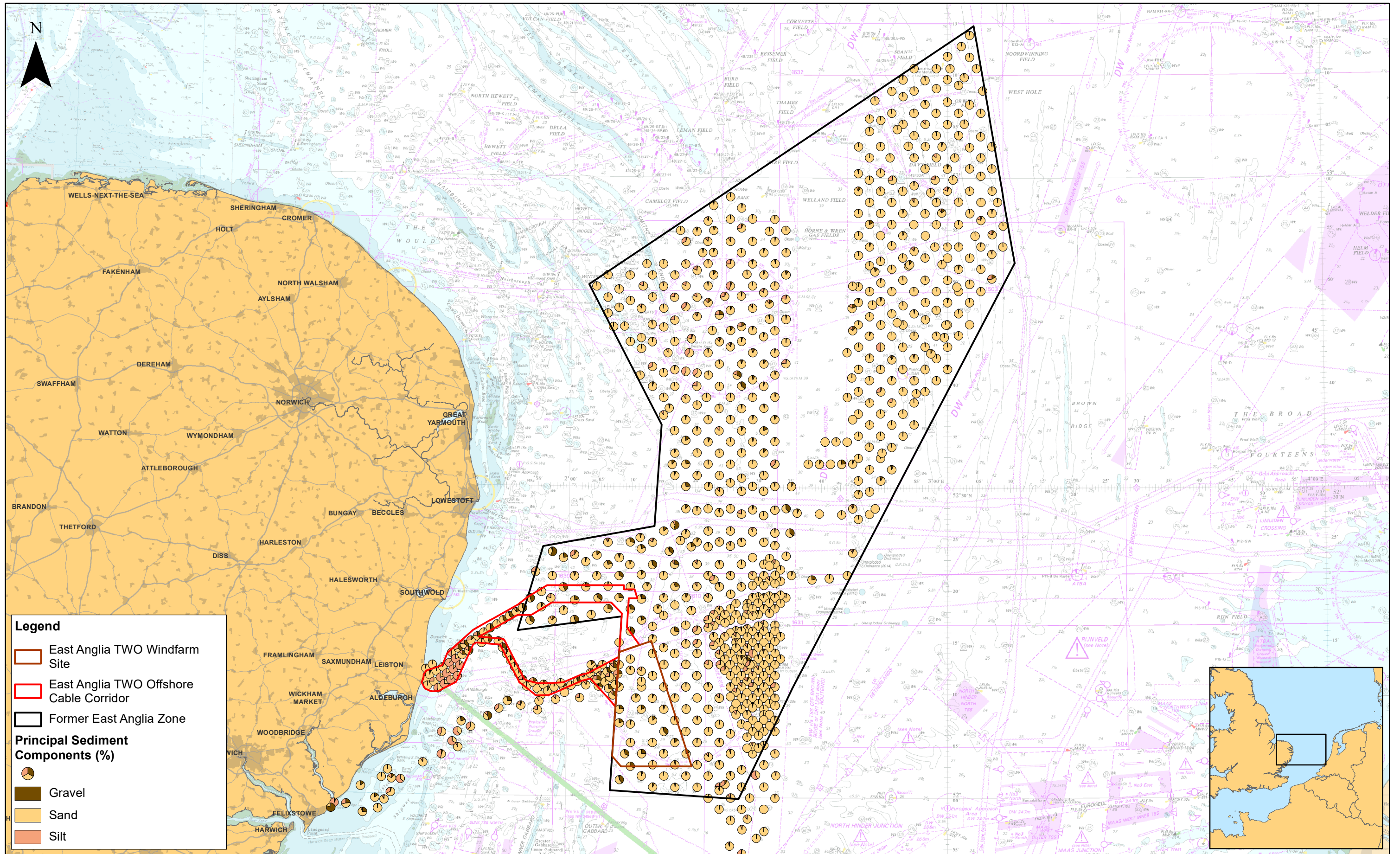
0 2.5 5 10 Km

Source: © MESH Ltd, 2011 & 2018; © Bibby Offshore, 2018; © FUGRO, 2014. Contains OS data © Crown copyright and database right, 2019. © British Crown and OceanWorks, 2018. All rights reserved. License No. EMS-EN01-1648150. Not to be used for navigation.
 This map has been produced to the latest known information at the time of issue, and has been produced for your information only. Please consult with the SPR Offshore GIS team to ensure the content is still current before using the information contained on the map.
 To the fullest extent permitted by law, we accept no responsibility or liability (whether in contract, tort (including negligence) or otherwise) in respect of any errors or omissions in the information contained in the map and shall not be liable for any loss, damage or expense caused by such errors or omissions.

East Anglia TWO

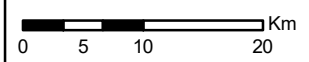
Sediment Distribution

Drg No	EA2-DEV-DRG-IBR-000555	
Rev	1	Datum: WGS 1984
Date	13/05/19	Projection: Zone 31N
Figure	9.3a	



Rev	Date	By	Comment
1	13/05/2019	FC	First Issue.

Scale @ A3	1:630,000
Prepared:	FC
Checked:	PM
Approved:	PP



East Anglia TWO
Sediment Distribution in the Context of the Former East Anglia Zone

Drg No	EA2-DEV-DRG-IBR-000556	
Rev	1	Datum: WGS 1984
Date	13/05/19	Projection: Zone 31N
Figure	9.3b	